

# BURNLEY & PENDLE CIRCUIT THE METHODIST CHURCH

God's grace in love and action

Newsletter Tuesday 31<sup>st</sup> October 2023

## Prayer time

In a world that God made good  
let us pray  
for people seeing things  
no human being should see  
for people seized by terror  
no human being should experience  
for people whose depths of suffering  
no human being should know.  
God of unquenchable hope  
Confirm our belief that this is not how things should be;  
Affirm our belief that things can and will be different;  
Strengthen our belief in Jesus who opens the way from  
death to resurrection, and Help us, as his disciples  
to be your agents for change in our broken world.

## Amen

**Rejoice in the Lord always, again I will say rejoice**  
so speaks St Paul in his letter to the church at Philippi  
and for us here in the 21st Century we have a great  
deal about which to rejoice, as gathered and gathering  
congregations and as individual men and women who  
are striving to follow Jesus to the best of our abilities  
and so we pray

\* **For all Christian communities** local, national, and  
international acknowledging that the tenet of our faith is  
to love the Lord our God with all our might, strength  
and soul AND to love our neighbour as ourselves. And  
so we pray for

\* **Our neighbours** who may be like us, or may be  
completely different in culture, in appearance, in  
outlook

\* **Our Families** those we see regularly and those  
whose geographical distance prohibits contact – never  
will it be out of sight and out of mind.

## Circuit Events this week

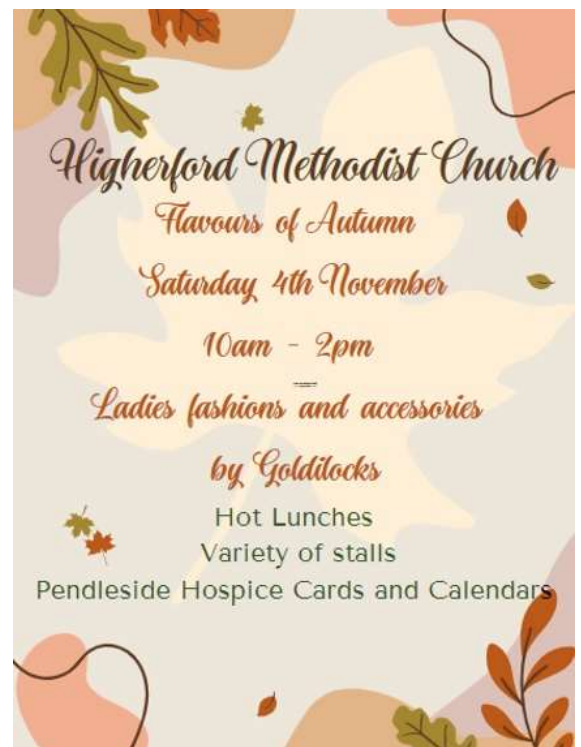
**Circuit Alpha Course – Thursday 2<sup>nd</sup>  
November** at Wheatley Lane  
Methodist Church, 6pm for food and  
the course will start at 6.30pm. this  
week's theme is Why and how do I  
pray?

**Circuit Messy Church – Friday 3<sup>rd</sup>  
November** from 4pm at Christ Church,  
Nelson.

**Circuit Prayer Breakfast – Saturday  
4<sup>th</sup> November** 8am at Padiham Road.  
Led by Revd Tony Graff.

## Church Event this week

### Higherford



**Rejoice in the Lord always** – easy for us, not so for people living in war-torn countries – the events in Israel (and not forgetting Ukraine) are terrible for us to read and hear about, how much more terrible for those people LIVING THERE. We pray for the safety of all people experiencing such horrors. We give thanks for those who are risking their lives whilst striving to look after the wounded and tend the sick

Heavenly Father, we lift to you those who are suffering the effects of conflict, poverty and injustice. May your healing touch be upon them, providing comfort, strength and renewed hope. Grant wisdom to world leaders and governments. In your mercy Lord bring healing and restoration to our broken world and may we play our part in whatever way you lead us. In the name of Jesus we pray. Amen

### Prayer Requests

Please forward your prayer requests to Suba who will then forward them, in confidence, to the Circuit Prayer Warriors. [Subashriedbarg91@gmail.com](mailto:Subashriedbarg91@gmail.com)

### Brunshaw

Brunshaw`s congregation are delighted to announce that they can now, at last, use their church once again and the first service will be Sunday, 5th November, 11am led by Revd Tony Graff.

Many, many thanks to everyone at Central who have made us so welcome. We don't intend to lose touch and will be returning for a joint service on 12th November!

### Request

Does your church have spare copies of Singing the Faith? If so, please could you contact Southfield. Thank you.

### Future Circuit Events

**Circuit Alpha Course** - at Wheatley Lane Methodist Church, 6pm for food and the course will start at 6.30pm.  
7<sup>th</sup> December – Why and how should I read the Bible?  
14<sup>th</sup> December – How does God Guide Us?

### Circuit Advent Worship



*Advent Engage Expand Revive Refresh*

a time of modern worship followed by food  
homemade soup and sandwiches

Saturday  
9<sup>th</sup> Dec  
11.30am

With  
Rev Phil Gough

at  
**Wheatley Lane Methodist Church**  
BB12 9ED

Please let us know if you are staying for lunch,  
text or email: Denise 07479200636 -  
denart@sky.com

 **WHEATLEY & PENNIE CIRCUIT THE METHODIST CHURCH**  
God's grace is love and action

A quiet space with activity sheets will be available for any children present.  
Car park on school yard.

## District

### Lancashire Sings Christmas

Radio Lancashire have confirmed that Lancashire Sings Christmas will take place. The date and time have been revised. The programme will go out live from the Blackburn Studio on **Monday 18<sup>th</sup> December at midday**. It has to be a daytime event as the evening schedule is now regional, whereas the daytime is local Lancashire Radio. The theme will be Carers at Christmas and will feature encouraging stories of care in the community, hospitals, nursing home and individual situations of care. If you know of some good examples that we could incorporate in the programme please let me know. Those taking part will gather at the Studio from 10.00am to rehearse.

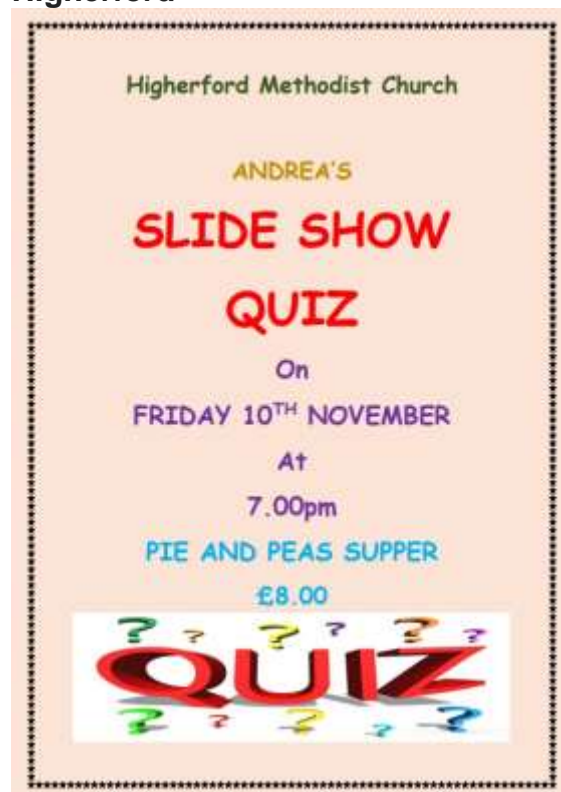
Stuart Wild  
District Ecumenical Officer

### Embracing Advent – District Retreat Day

There are 7 places still available for the District Retreat Day - entitled EMBRACING ADVENT - at Whalley Abbey on Wednesday 22nd November. This will run from 9.30am to 3.30pm, and the cost of £25.00 includes refreshments throughout the day and lunch in the Abbey's refectory. Bookings can be made via the District Office until **9am on Thursday 16th November**.

## Future Church Events

### Higherford



### Christ Church





## MWIB

Ladies, would you like a mini break in February 2024?

Bookings are now being taken for the District Methodist Women's Conference, held at the Glendower Hotel in St. Anne's on 5<sup>th</sup>-6<sup>th</sup> February, 2024. The Theme will be "The Lord is my Shepherd" led by Deacon Denise Creed. Denise has a love for easy crafts, women in the Bible and living by the sea.

Methodist women from the Liverpool and Bolton & Rochdale Districts have asked to join with us as they don't have anything like this organised in their own Districts. The Conference begins with lunch on Monday and concludes on Tuesday afternoon after the final session. Good food, lovely hotel and great fellowship. Get your booking form now.

Cost will be £135. Contact Sheila Chadwick, tel. Mobile 07553456745 or email

[shenevchadwick181@gmail.com](mailto:shenevchadwick181@gmail.com)

Completed forms need to be returned by 4th December 2023.

## Wheatley Lane



## Christ Church

### Methodist Young Adult Fellowship (MYAF)

Taking inspiration from the Wesley's Holy Club, Methodist Young Adult Fellowship (MYAF) has been formed by a group of Young Adults within the Methodist Church as a group to offer fellowship to one another. Comprising of a WhatsApp group and monthly zoom gatherings, MYAF hopes to be a safe and inclusive space for young adults to meet, chat, pray and get to know one another in a church which can sometimes feel very grey.

The group is for 18-30 year olds who have connections with the Methodist church and would like to spend time connecting with other young adult Methodists.

To join the group or find out more, please email [admin@yorkshirenemethodist.org](mailto:admin@yorkshirenemethodist.org)



## Community



Please contact Bea Foster 07875517043 for tickets.

### **BURNLEY FOR ALL**

An informal evening with a variety of speakers discussing food poverty and support available in Burnley on Wed 15<sup>th</sup> Nov between 7pm and 9pm at Down Town. Contact Burnley Together on 01282 686402. Refreshments on arrival as well as a free membership for the Community Grocery.

**The next newsletter will be published on Tuesday 7<sup>th</sup> November 2023. Please forward any contributions to me before 5pm on Monday 6<sup>th</sup> November 2023.** Claire Slack, Circuit's Communication & Information Coordinator - 07752278664 [circuitoffice@2101methodists.org](mailto:circuitoffice@2101methodists.org)

## Padiham Road



## Higherford

